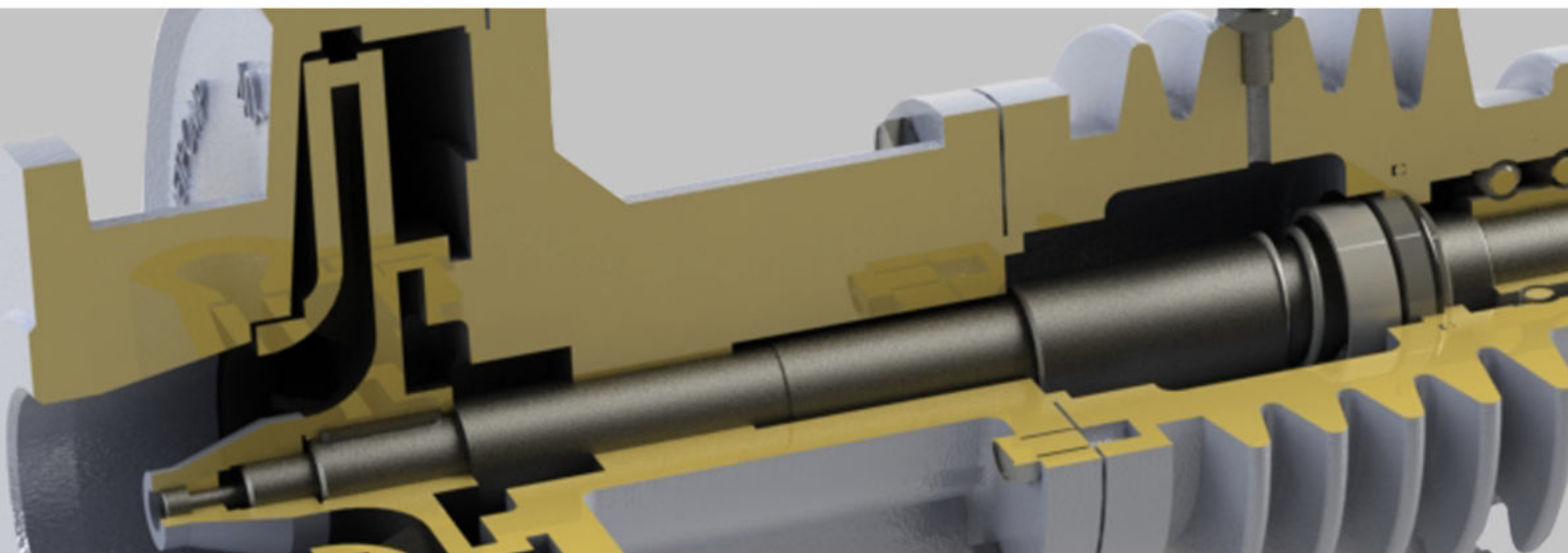


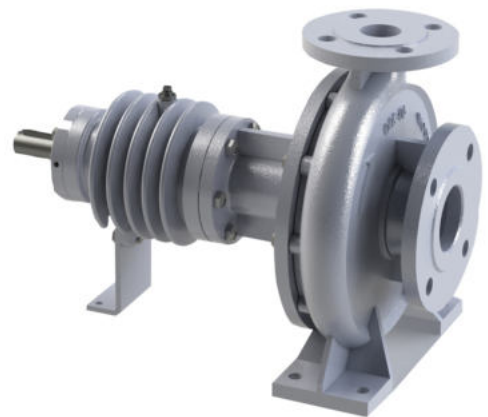


VESTAPOMP
Makes life comfortable

VESTA



Hot Oil Pumps



About Us

We have been designing and producing various models of pumps to be used in different fields of industry. Experienced in product selection and production, our staff renders the services which meet the requirements of the industrial enterprises with after sales support and services which maintain our long term business relationships.

Since various fluids used in many sectors present different properties such as durability, viscosity, radiance, temperature, pressure, grains, contamination, abrasion, we have designed customized pumps according to each fluid/viscose type and developed and diversified our product range in line with your requests and requirements. We produce Diaphragm Pumps, Hot Oil Pumps, Gear Pumps, Twin Screw Pumps, Centrifugal Pumps, Vortex Pumps. The pumps we produce with our long years of experience are used in food, textile, paint, cleaning, energy, chemistry sectors.

Our company is a pioneer in the production of diaphragm transfer pumps with VESTAPOMP brand. VESTAPOMP products are used in European Union and Middle East countries and CIS countries, and the number of countries that choose us is also increasing year by year. Whereas, this is our quality certificate and one of the most significant factors which also makes us strong, reliable and energetic in the sector.

You may consult us regarding your new pump purchases in order to contribute your company's production quality or request our assistance and support in providing maintenance and increasing efficiency of your pumps. In order for you to safely transfer your fluids through high quality pumps, we are always by your side with our competent and experienced staff.

Our aim is to provide quality products and services to our customers.

General Information

Discharge Flange	: DN 32 – DN 150 mm
Capacity	: 400 m ³ /h
Head	: 140 m
Motor Speed	: 1500–3600 rpm
Operating Temperature	: 350°C (max.)
Cooling	: Air cooling
Pressure (Pmax)	: 16 bar
(Pmax= Suction Pressure + Shut off Head)	

Design Standard : EN733 (DIN 24255)

Handled Liquids

All types of organic and synthetic oils which made for heat transfer and not include abrasive components.

Applications

Chemical and Petrochemical Plants
 Paper Factories
 Sugar Factories
 Food and Medicine Factories
 Plastic, Rubber and Synthetic Fiber Factories
 Cooking and Heating Ovens (Furnaces)
 Textile and Leather Industry
 Iron-Steel Industry
 Paint Industry
 Asphalt and Bitumen Processing Industry
 Wood processing and Furniture Industries
 Heat Transfer Facilities Above 100°C

Approximate Capacity Calculation

$V=Q/(Cp \cdot \rho \cdot \Delta T)$
 V: Pump capacity (m³/h)
 Q: Boiler heat capacity (kW or kcal/h)
 Cp: Oil average specific heat (kJ/kg.K or kcal/kg.K)
 ρ: Oil average density (kg/m³)
 ΔT: Temperature difference (round-trip)

Oils, using in hot oil pumps, commonly volumetric specific heat: (Between 200-350°C)
 Cp·ρ=500 kcal/m³.K

In usage of different oils, check the tables.

In this situation;

$$V = (Q(\text{kcal/h})) / (500 \cdot \Delta T)$$

$$V = (Q(\text{kW})) / (500 \cdot \Delta T) \quad (1\text{kW}=861 \text{ kcal/h})$$

In practice, the difference between temperatures in round-trip is 18 to 48 °C. In this situation;

$$\Delta T=18^{\circ}\text{C} \quad V(\text{m}^3/\text{h})= (Q(\text{kcal/h}))/9000$$

$$(Q(\text{kW}))/10,5 \quad \Delta T=30^{\circ}\text{C}$$

$$V(\text{m}^3/\text{h})= (Q(\text{kcal/h}))/15000$$

$$Q(\text{kW}))/17,4 \quad \Delta T=42^{\circ}\text{C}$$

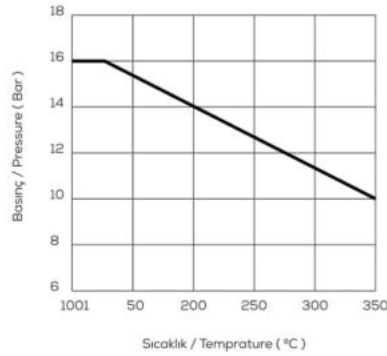
$$V(\text{m}^3/\text{h})= (Q(\text{kcal/h}))/21000=(Q(\text{kW}))/24,4$$

Hot Oil Pump

Design Features

From the hydraulic point of view, the NKY pumps are centrifugal single stage, horizontal, volute type pumps. With regards to the mechanical design, the main concept of the series is to a maximum, the mechanical seal and ball bearings from the source of heat that constitutes the pump casing, placing between both a thermal barrier and cooling the mechanical seal housing and bearing support by natural convection. Pump and motor are fitted on a common baseplate connected to each other by a flexible coupling.

Pressure and Temperature Limits



Material Options

PART LIST	0.6025	0.7040	1.0619	1.4308	1.4309	1.4408	1.4409	1.4500	1.4517	1.4469	1.4317	2.1050.0	2.0975.1	1.0503	1.4021	1.4301	1.4306	1.4401	1.4404	1.4462	PARÇA LİSTESİ		
Volute Casing		●				○																Salyangoz Gövde	
Casing Cover		●				○																Gövde Kapağı	
Impeller	●	○				○																Çark	
Shaft						○									●				○			Mil	
Bearing Housing	●	○				○																Rulman Yatağı	
Wear Plate		●				○																Aşınma Plakası	
Mechanical Seal																						EN 12756 / DIN 24960	Mekanik Salmastro

(*) Different brand and type mechanical seal can be use according to customer request.

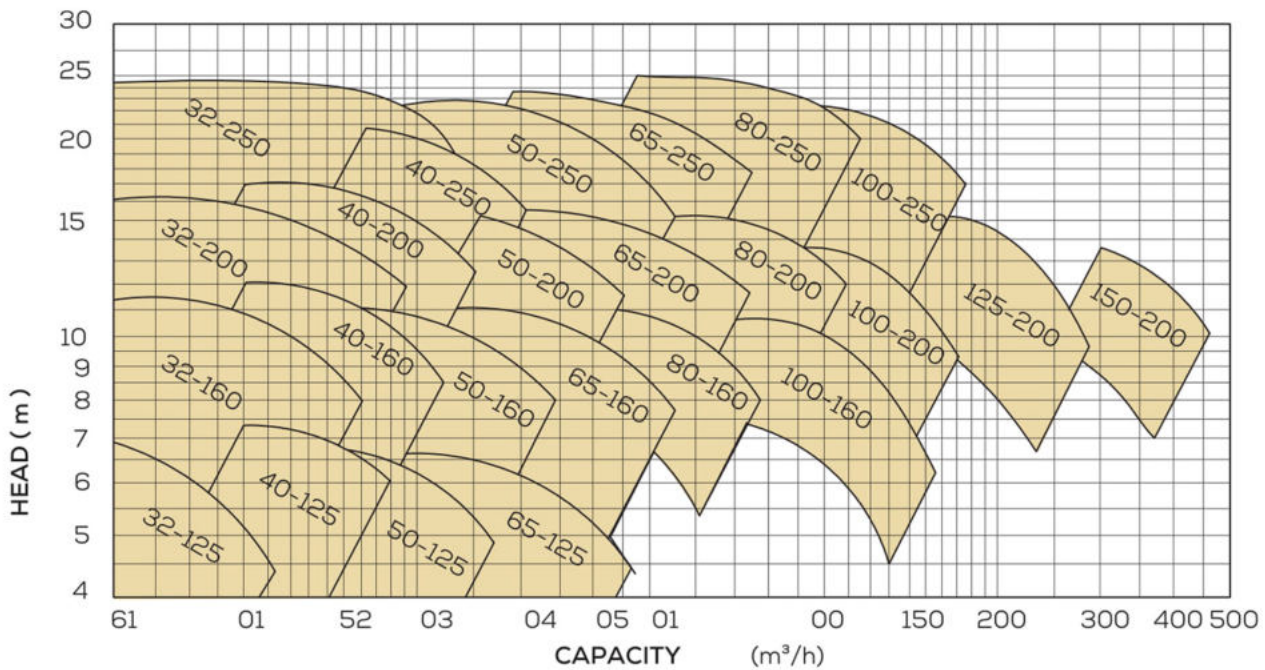
(*) Çalışma şartlarına veya alıcının isteğine göre farklı tip ve marka mekanik salmastro kullanılabilir.

● Standart İmalat **Standard Manufacturing**
○ İsteğe Bağlı **Optional**

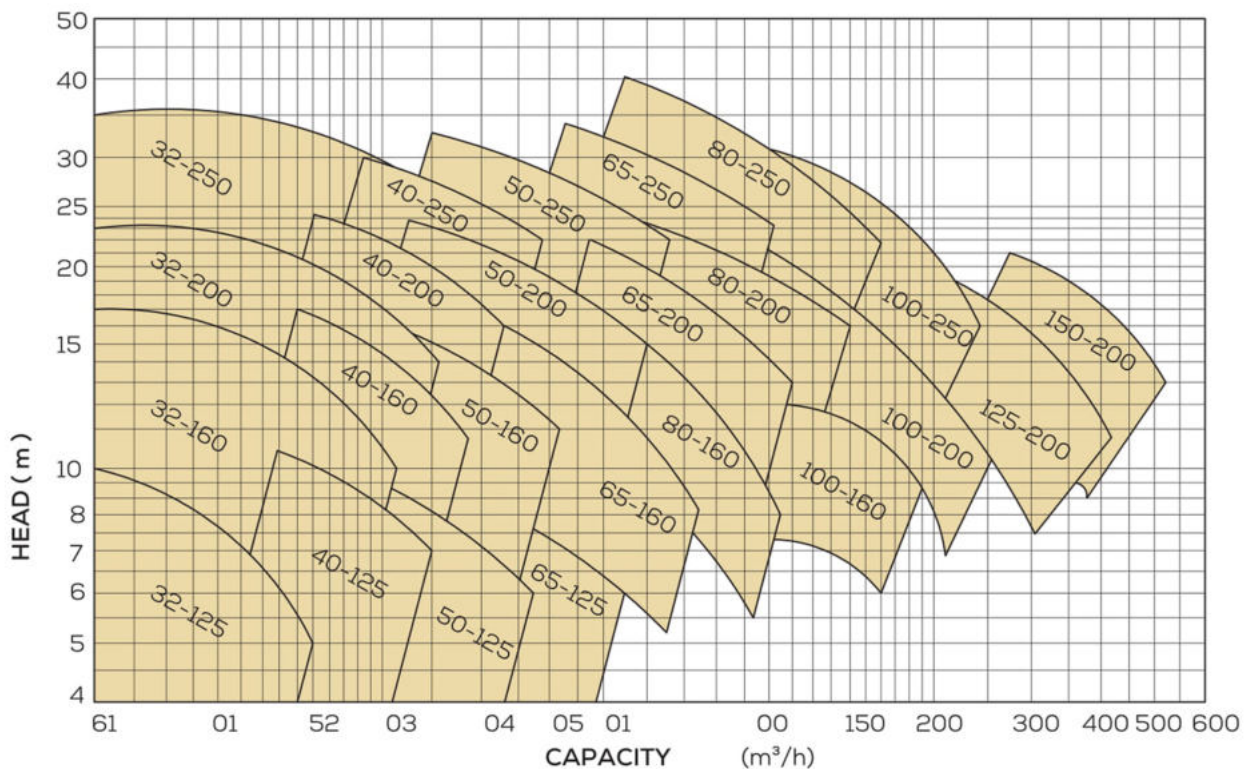
DESCRIPTIONS	DIN7007	EN-DIN	ASTM
CAST IRON	0.6025	A 48 Class 40-B	GJL-250 (GG 25)
NODULAR CAST IRON	0.7040	A 536 Gr. 60-40-18	GJS-400-15 (GGG 40)
CAST STEEL	1.0619	A216 Gr.WCB	GP240GH (GS-C 25)
CHROME NICKEL CAST STEEL	1.4308	A 351/743/744 Gr. CF8	G-X5 Cr Ni 19-10
CHROME NICKEL CAST STEEL (L.C.)	1.4309	A 351/743/744 Gr. CF3	G-X2 Cr Ni 19-11
CHROME NICKEL MOLYBDENUM CAST STEEL	1.4408	A 351/743/744 Gr. CF8M	G-X5 Cr Ni Mo 19-11-2
CHROME NICKEL MOLYBDENUM CAST STEEL (L.C.)	1.4409	A 351/743/744 CF3M	G-X2 Cr Ni Mo 19-11-2
AUSTENITIC CAST STEEL	1.4500	A 351/743/744 (CN7M)	G-X2 Cr Ni Mo Cu Nb 25-20
AUSTENITIC - FERRITIC CAST STEEL (DUPLEX)	1.4517	A 890 Gr.1B (CD4MCuN)	G-X2 Cr Ni Mo Cu N 25-6-3-3
AUSTENITIC - FERRITIC CAST STEEL (SUPERDUPLEX)	1.4469	A 890 Gr. SA (CE3MN)	G-X2 Cr Ni Mo N 26-7-4
MARTENZITIC STAINLESS CAST STEEL	1.4317	A 351/743/744 (CA6NM)	G-X4Cr Ni 3-4
CAST BRONZE (TIN ALLOY)	2.1050.01	B584(90700	G-CuSn 10
CAST BRONZE (NICKEL ALLOY)	2.0975.01	B148 C 95800	G-CU Al 10 Ni
CARBON STEEL	1.0503	A 29/108/576 1045	C45
CHROME STEEL	1.4021	A 276 Type 420	X20 Cr13
CHROME STEEL	1.4301	A 276 Type 304	XS Cr Ni 18-10
CHROME NICKEL STEEL (L.C.)	1.4306	A 276 Type 304L	X2 Cr Ni 19-11
CHROME NICKEL MOLYBDENUM STEEL	1.4401	A 276 Type 316	XS Cr Ni Mo 17-12-2
CHROME NICKEL MOLYBDENUM STEEL (L.C.)	1.4404	A 276 Type 316L	X2 Cr Ni Mo 17-12-2
DUPLEX STEEL	1.4462	A276 S 31803	X2 Cr Ni Mo N 22-5-3

Selection Charts

1500 RPM 1500 D/D (50 hz)



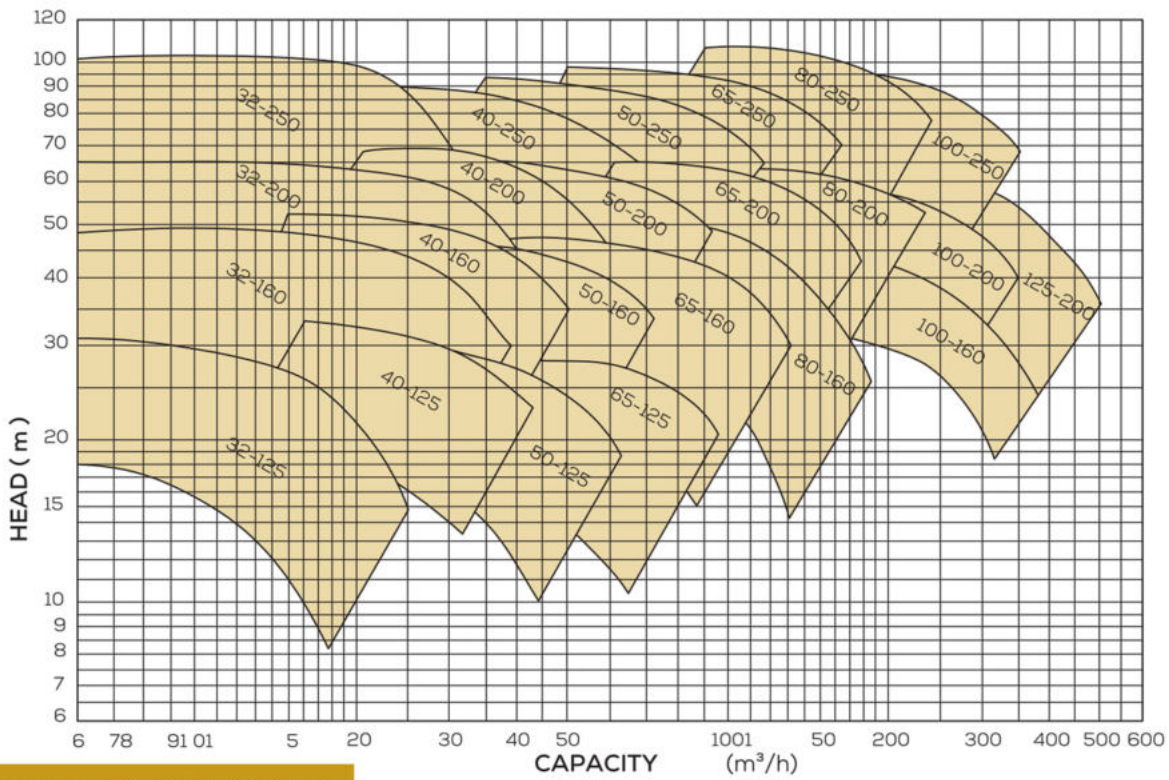
1800 RPM 1800 D/D (60 hz)



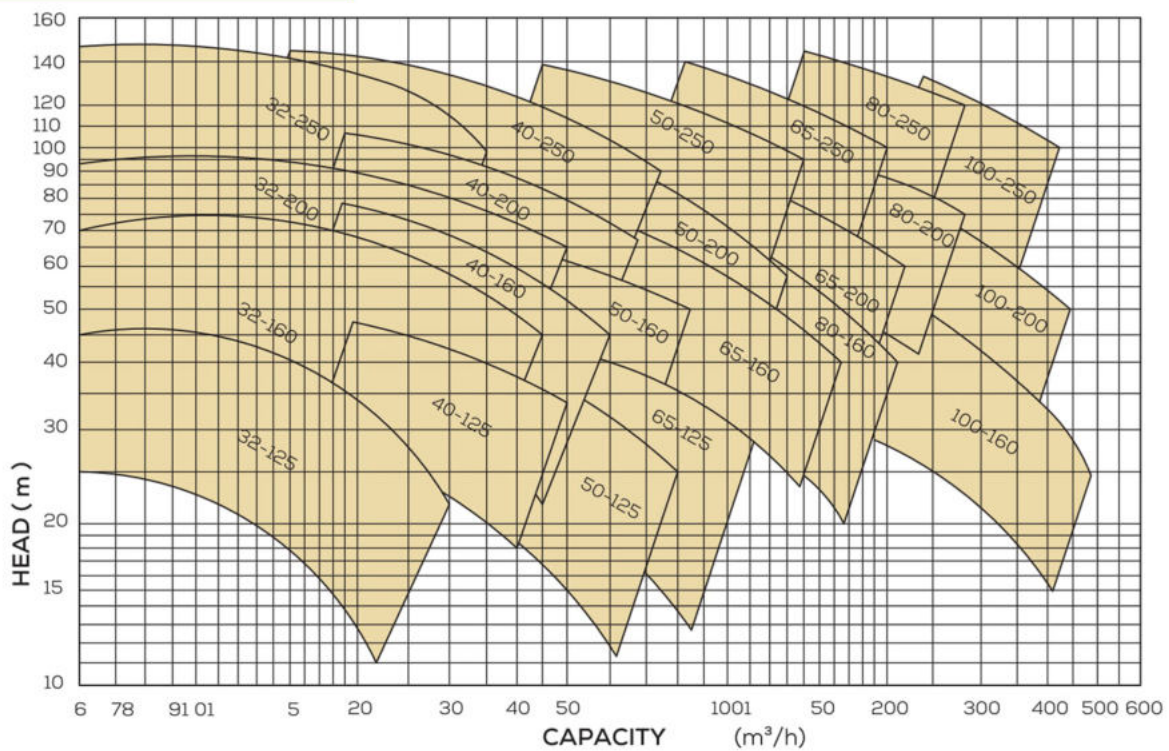
Hot Oil Pump

Selection Charts

3000 RPM 3000 D/D (50 hz)



3600 RPM 3600 D/D (60 hz)

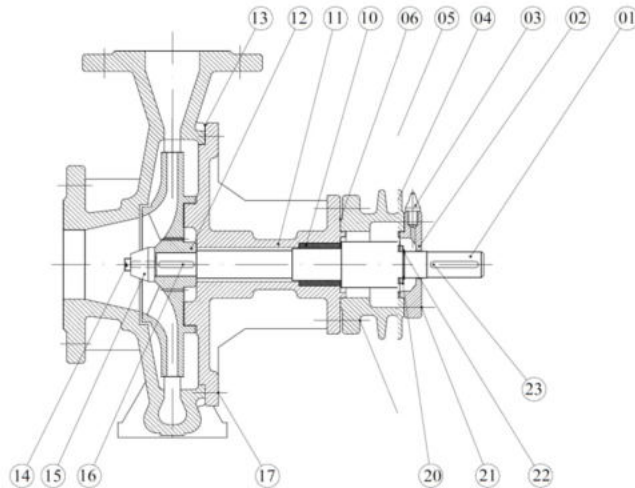


Technical Specifications

PUMP TYPE POMPA TİPİ	SHAFT MİL	BEARING HOUSING RULMAN YATAĞI	CASING COVER GÖVDE KAPAĞI	WEAR PLATE AŞINMA PLAKASI	SUPPORT FOOT AYAK SACI	MECHANICAL SEAL MEKANİK SALMASTRA	BEARING TYPE RULMAN TİPİ
32-125	2 no	1 no	2 no	2 no	1 no	M37GN4/30	2 x 6306 Z C3
32-160	2 no	1 no	5 no	4 no	2 no	M37GN4/30	2 x 6306 Z C3
32-200	2 no	1 no	7a no	5a no	3 no	M37GN4/30	2 x 6306 Z C3
32-250	3 no	1 no	8 no	8 no	4 no	M37GN4/30	2 x 6306 Z C3
40-125	2 no	1 no	2 no	2 no	1 no	M37GN4/30	2 x 6306 Z C3
40-160	2 no	1 no	5 no	4 no	2 no	M37GN4/30	2 x 6306 Z C3
40-200	2 no	1 no	7a no	5a no	3 no	M37GN4/30	2 x 6306 Z C3
40-250	3 no	1 no	8 no	8 no	4 no	M37GN4/30	2 x 6306 Z C3
50-125	2 no	1 no	2 no	2 no	2 no	M37GN4/30	2 x 6306 Z C3
50-160	2 no	1 no	5 no	4 no	3 no	M37GN4/30	2 x 6306 Z C3
50-200	2 no	1 no	7a no	5a no	3 no	M37GN4/30	2 x 6306 Z C3
50-250	3 no	1 no	8 no	8 no	4 no	M37GN4/30	2 x 6306 Z C3
65-125	2 no	1 no	2 no	2 no	3 no	M37GN4/30	2 x 6306 Z C3
65-160	2 no	1 no	5 no	4 no	3 no	M37GN4/30	2 x 6306 Z C3
65-200	2 no	1 no	7a no	5a no	4 no	M37GN4/30	2 x 6306 Z C3
65-250	5 no	2 no	11 no	9 no	7 no	M37GN4/40	2 x 6308/ Z C3
80-160	2 no	1 no	5 no	4 no	4 no	M37GN4/30	2 x 6306/ Z C3
80-200	5 no	2 no	9 no	6 no	6 no	M37GN4/40	2 x 6308/ Z C3
80-250	5 no	2 no	11 no	9 no	7 no	M37GN4/40	2 x 6308/ Z C3
100-160	2 no	1 no	5 no	4 no	5 no	M37GN4/30	2 x 6306/ Z C3
100-200	5 no	2 no	9 no	6 no	7 no	M37GN4/40	2 x 6308/ Z C3
100-250	5 no	2 no	11 no	9 no	8 no	M37GN4/40	2 x 6308/ Z C3
125-200	5 no	2 no	10 no	7 no	9 no	M37GN4/40	2 x 6308/ Z C3
150-200	5 no	2 no	10 no	7 no	11 no	M37GN4/40	2 x 6308/ Z C3

Recommended Tavsiye Edilen: SAE 10 Natural Oil

Sectional View For 350 C



PART LIST

01	Main Shaft	13	Gasket
02	Bearing Cover	14	Allen Bolts
03	Grease Fitting	15	Impeller Nut
04	Bearing	16	Impeller Key
05	Seal Adapter	17	Stud
06	O-ring	18	Stud
07	Mechanical Seal	19	Bearing Body
08	Air Fitting	20	Shim
09	Gasket	21	Bolt
10	Carbon Graphite Bearing	22	Shaft Ring
11	Intermediate Casing	23	Couplin Key
12	Impeller		

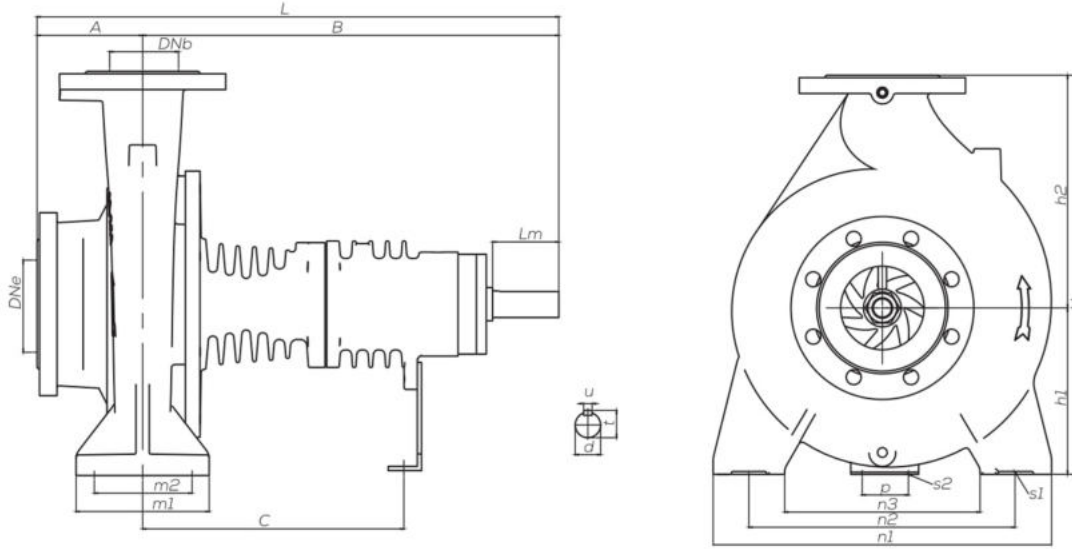
Seal Solutions

Shaft diameter	16 ...80 mm (0.63"... 3.15")
Temperature	20 °C ... +180 °C (-4 °F ... +355 °F)
Seal Face	Silicon Carbide Silisyum Karbür
Seat Face	Silicon Carbide Silisyum Karbür
O-ring	"VITON"

* Note: Above data mentioned according to BURGMANN Brand. Technical datas can be change according to different brand as customer request.

Hot Oil Pump

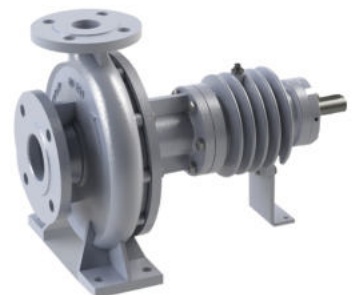
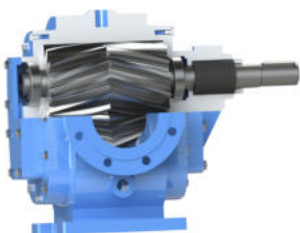
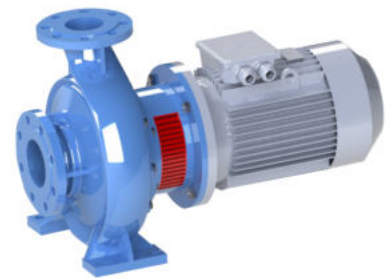
Pump Dimension



POMPA TİPİ PUMP TYPE	ÖLÇÜLER / DIMENSIONS (mm)																				Ağırlık Weight (kg)	
	Dış Ölçüler Dimensions							Ayak Bağlantı Ölçüleri Support & Foot Dimensions							Mil Ucu Ölçüleri Shaft End Dimensions							
	DNe	DNb	A	B	L	H	h1	h2	m1	m2	n1	n2	n3	s1	p	s2	C	d	Lm	t		u
32-125	50	32	80	390	470	252	112	140	100	70	190	140	90	12	110	14	250	24	50	27	8	30
32-160	50	32	80	381	461	292	132	160	100	70	242	190	138	12	110	14	243	24	50	27	8	34
32-200	50	32	80	384	464	340	160	180	100	60	244	190	136	12	110	14	246	24	50	27	8	39
32-250	50	32	100	389	489	405	180	225	126	70	320	250	188	14	110	14	251	24	50	27	8	49
40-125	65	40	80	391	471	252	112	140	100	70	210	160	110	13	110	14	252	24	50	27	8	32
40-160	65	40	80	382	462	292	132	160	100	70	242	190	138	12	110	14	244	24	50	27	8	35
40-200	65	40	100	385	485	340	160	180	100	62	266	212	158	12	110	14	247	24	50	27	8	40
40-250	65	40	100	384	484	405	180	225	126	82	320	255	186	14	110	14	246	24	50	27	8	53
50-125	65	50	100	390	490	292	132	160	100	67	240	190	140	12	110	14	251	24	50	27	8	35
50-160	65	50	100	382	482	340	160	180	100	67	266	212	158	12	110	14	244	24	50	27	8	38
50-200	65	50	100	385	485	360	160	200	100	72	265	212	159	12	110	14	247	24	50	27	8	43
50-250	65	50	100	387	487	405	180	225	126	82	316	248	176	12	110	14	249	24	50	27	8	56
65-125	80	65	100	391	491	340	160	180	126	92	280	215	150	14	110	14	252	24	50	27	8	39
65-160	80	65	100	383	483	360	160	200	126	90	277	212	147	12	110	14	245	24	50	27	8	42
65-200	80	65	100	386	486	405	180	225	126	90	320	250	180	12	110	14	248	24	50	27	8	47
65-250	80	65	100	502	602	450	200	250	160	108	365	280	195	18	110	14	314	32	80	35	10	76
80-160	100	80	125	390	515	405	180	225	126	89	315	250	185	12	110	14	251	24	50	27	8	47
80-200	100	80	125	500	625	430	180	250	126	94	345	275	201	16	110	14	312	32	80	35	10	73
80-250	100	80	125	501	626	480	200	280	160	110	407	317	217	18	110	14	313	32	80	35	10	80
100-160	125	100	125	399	524	480	200	280	160	107	363	278	193	18	110	14	261	24	50	27	8	68
100-200	125	100	125	506	631	480	200	280	160	110	360	284	206	20	110	14	318	32	80	35	10	72
100-250	125	100	140	502	642	505	225	280	160	110	395	315	235	18	110	14	314	32	80	35	10	85
125-200	150	125	140	511	651	565	250	315	160	118	400	315	244	18	110	14	323	32	80	35	10	89
150-200	200	150	160	514	674	635	280	355	200	136	513	403	293	20	110	14	326	32	80	35	10	135

Our Product Portfolio

- Diaphragm Pump
 - . Metallic Body Pumps
 - . Plastic Body Pumps
 - . Hygenic Pumps
 - . Electromechanical Diaphragm Pumps
 - . Powder Pumps
 - . High Pressure Diaphragm Pumps
- External Gear Pumps
 - . Monoblock Gear Pumps
 - . High Pressure Gear Pump
- Twin Screw Pumps
- Centrifugal Pumps
 - . End Suction Centrifugal Pumps
 - . Monoblock Centrifugal Pumps
 - . Inline Centrifugal Pumps
- Vortex Pumps
- Regenerative Pumps
- Armatures



Vesta Pump Head Office

Address: Yeşilbağlar Mh. Selvili Sk. No:2 Helis Beyaz Ofis Kat:7

Pendik / İstanbul / Turkey

Tel : [+90] 216 518 44 40

Faks: [+90] 216 518 44 40

E-mail : vesta@vestapump.com